

LISTEN.
THINK.
SOLVE.®

INTEGRATED PRODUCTION & PERFORMANCE SUITE



Asset Management

FactoryTalk® AssetCentre



INSTALLATION GUIDE

PUBLICATION FTAC-IN002D-EN-E–November 2008

Supersedes Publication FTAC-IN002C-EN-E



Allen-Bradley • Rockwell Software

**Rockwell
Automation**

Contact Rockwell Customer Support Telephone — 1.440.646.3434
Online Support — <http://www.rockwellautomation.com/support/>

Copyright Notice © 2008 Rockwell Automation Technologies, Inc. All rights reserved. Printed in USA.

This document and any accompanying Rockwell Software products are copyrighted by Rockwell Automation Technologies, Inc. Any reproduction and/or distribution without prior written consent from Rockwell Automation Technologies, Inc. is strictly prohibited. Please refer to the license agreement for details.

Trademark Notices Allen-Bradley, ControlLogix, eProcedure, FactoryTalk, Rockwell Automation, Rockwell Software, RSLinx, RSView, and the Rockwell Software logo are registered trademarks of Rockwell Automation, Inc.

The following logos and products are trademarks of Rockwell Automation, Inc.:

RSBizWare, the RSBizWare logo, RSBizWare Batch, FactoryTalk Batch, RSBizWare BatchCampaign, RSBizWare BatchHistorian, FactoryTalk Historian Classic for Batch, RSBizWare Historian, FactoryTalk Historian Classic, RSBizWare MaterialTrack, and RSLoop Optimizer.

Any Rockwell software or hardware not mentioned here are also trademarks, registered or otherwise, of Rockwell Automation Technologies, Inc.

Other Trademarks ActiveX, Microsoft, Microsoft Access, SQL Server, Visual Basic, Visual C++, Visual SourceSafe, Windows, Windows ME, Windows NT, Windows 2000, Windows Server 2003, and Windows XP are either registered trademarks or trademarks of Microsoft Corporation in the United States and/or other countries.

Adobe, Acrobat, and Reader are either registered trademarks or trademarks of Adobe Systems Incorporated in the United States and/or other countries.

ControlNet is a registered trademark of ControlNet International.

DeviceNet is a trademark of the Open DeviceNet Vendor Association, Inc. (ODVA).

Ethernet is a registered trademark of Digital Equipment Corporation, Intel, and Xerox Corporation.

OLE for Process Control (OPC) is a registered trademark of the OPC Foundation.

Oracle, SQL*Net, and SQL*Plus are registered trademarks of Oracle Corporation.

All other trademarks are the property of their respective holders and are hereby acknowledged.

Warranty This product is warranted in accordance with the product license. The product's performance may be affected by system configuration, the application being performed, operator control, maintenance, and other related factors. Rockwell Automation is not responsible for these intervening factors. The instructions in this document do not cover all the details or variations in the equipment, procedure, or process described, nor do they provide directions for meeting every possible contingency during installation, operation, or maintenance. This product's implementation may vary among users.

This document is current as of the time of release of the product; however, the accompanying software may have changed since the release. Rockwell Automation, Inc. reserves the right to change any information contained in this document or the software at any time without prior notice. It is your responsibility to obtain the most current information available from Rockwell when installing or using this product.

Contents

1 • Introduction	1
FactoryTalk Services Platform	1
Upgrading FactoryTalk AssetCentre.....	1
Optional upgrades with CPR 9 SR 1	2
Location of upgrade setup files	2
About the documentation set (or, Where do I start?).....	3
About this book	3
The components of FactoryTalk AssetCentre.....	3
System requirements	5
Server computer requirements.....	5
Client and agent computer requirements	6
Network requirements	7
About the installation process	8
2 • Converting an RSMACC system.....	11
About migrating the databases	11
Migrating from RSMACC Change Management to FactoryTalk AssetCentre	12
3 • Upgrading FactoryTalk AssetCentre from v. 2.00 (CPR 7) to v. 2.31 (CPR 9 SR 1).....	15
Upgrading to CPR 9 SR 1	15
4 • Installing the FactoryTalk AssetCentre server.....	17
Installing Internet Information Services	19
Installing Microsoft SQL Server 2005	20
Installing Microsoft SQL Server 2005 Service Packs	23
Minimum Microsoft SQL Server 2005 Permissions	24
Installing FactoryTalk Activation	24
Installing the FactoryTalk Activation server and activating the software.....	25
Installing the FactoryTalk Activation client and activating the software.....	27
Installing ProCalV5 server software	28

Installing FactoryTalk AssetCentre server software	29
Installing FactoryTalk Services Platform	31
FactoryTalk AssetCentre server installer	32
FactoryTalk AssetCentre Client Package installer	35
FactoryTalk AssetCentre Common Components installer	35
FactoryTalk AssetCentre Calibration Management Server installer	36
FactoryTalk AssetCentre Process Device Configuration Server installer	37
Using the Windows Firewall Configuration Utility	37
Installing the ProCalV5 server software after the FactoryTalk AssetCentre server	38
Running the ProCalV5 Data Source Edit Wizard	38
5 • Installing FactoryTalk AssetCentre clients.....	41
Where to install the FactoryTalk AssetCentre client	41
Optional upgrades with CPR 9 SR 1	41
Installing FactoryTalk AssetCentre clients	42
Installing FactoryTalk Services Platform	45
FactoryTalk AssetCentre Common Components installer	46
FactoryTalk AssetCentre Calibration Management client software installer.....	46
FactoryTalk AssetCentre Process Device Configuration client software installer.....	47
Installing RSLinx Classic Lite.....	47
Installing RSLinx Enterprise	48
Using the Windows Firewall Configuration Utility	49
Checking to see if the client is installed correctly.....	50
Installing the ProCalV5 client software	50
Installing DTMs	51
6 • Installing FactoryTalk AssetCentre agents	53
Where to install FactoryTalk AssetCentre agents.....	53
Optional upgrades with CPR 9 SR 1	54
Installing the FactoryTalk AssetCentre Disaster Recovery agent	54
Installing FactoryTalk Services Platform	56
Installing RSLinx Classic Lite.....	58
FactoryTalk AssetCentre Common Components installer	59
FactoryTalk AssetCentre Disaster Recovery agent installer	59
FactoryTalk AssetCentre Agent Host installer.....	59
RSLogix 5000 Compare installer	59
Installing RSLinx Enterprise	60
Using the Windows Firewall Configuration Utility	61

Configuring for security-enabled RSLogix programming software	62
If operating in a Windows domain	62
If operating in a Windows workgroup.....	63
Checking to see if the agent software is current	64
7 • Configuring FactoryTalk AssetCentre	67
Configuring for client access to the server.....	67
Adding users to the FactoryTalk Directory	67
Adding computers to the FactoryTalk Directory.....	68
Configuring feature security for FactoryTalk AssetCentre users	69
8 • Troubleshooting FactoryTalk AssetCentre installation	73
General installation	73
A red x appears next to an item to be installed.....	73
A “Program Maintenance” window appears while installing	73
Server installation.....	73
SQL collation error encountered during database installation	73
Unable to log on to SQL Server during server installation	74
Client and agent installation.....	74
Web page for installing the FactoryTalk AssetCentre client and agent cannot be displayed	74
“Error reading Primary Server Name from FactoryTalk Directory” during client installation.....	75
Starting the client	76
“Error initializing FactoryTalk AssetCentre” appears when attempting to start the client	76
“The client and server versions are incompatible”	76
“Cannot initialize application eventing subsystem” or “No connection could be made because the target machine actively refused it” appears when starting the client	76
“At least one service or driver failed during system startup. Use Event Viewer to examine the event log for details” appears when attempting to start the client.....	77
“Error initializing FactoryTalk AssetCentre. Could not load file or assembly... CalibrationPlugin.dll” appears when attempting to start the client.....	77
Other errors starting the client.....	77
Starting the agent	78

Using Calibration Management	78
“No ProCalV5 Server connection information exists on the FactoryTalk AssetCentre server” appears when attempting to use Calibration Management features	78
“Error executing ProCalV5 commands, check ProCalV5 installation” appears when attempting to use Calibration Management features	78
“Error initializing FactoryTalk AssetCentre. Could not load file or assembly... CalibrationPlugin.dll” appears when attempting to start the client.....	79
Unable to run the ProCalV5 Data Source Edit Wizard	79
A • Installing Microsoft SQL Server 2000.....	81
Installing Microsoft SQL Server 2000.....	81
Installing Microsoft SQL Server 2000 Service Pack 4.....	83
B • Reference.....	85
Additional ports you may have to open	85
Index.....	89

1

Introduction

FactoryTalk® AssetCentre version 2.31 monitors your factory automation system and provides centralized tools to minimize downtime due to unauthorized actions or failing devices. It does this by:

- providing version control and archiving of program files and documents.
- providing a disaster recovery system that verifies your devices' program and configuration files against protected master files, ensuring quick and accurate recovery if a problem should occur (optional Disaster Recovery capability).
- monitoring FactoryTalk-enabled software products and logging system events and user actions (recorded in the Event log and Audit log respectively).
- managing device configuration files.
- managing process device calibration, including scheduling and tracking (optional Calibration Management capability).
- managing and configuring DTM devices (optional Process Device Configuration capability).

DTM stands for “Device Type Manager.” It is a software component for devices that contains device information and configuration parameters for that device. The device manufacturer provides the DTM for the device. DTMs are designed according to FDT (Field Device Tool) standards.

FactoryTalk Services Platform

FactoryTalk AssetCentre uses FactoryTalk Services Platform to provide seamless connectivity with other FactoryTalk-enabled software. Users and computers are defined in FactoryTalk Directory; access to actions within the FactoryTalk AssetCentre system is controlled with FactoryTalk Security.

Upgrading FactoryTalk AssetCentre

If you are upgrading from a previous version of FactoryTalk AssetCentre, the steps to follow depend on which version you are upgrading from:

- To upgrade from FactoryTalk AssetCentre version 2.00 (CPR 7) to version 2.31 (CPR 9 SR 1), follow the instructions in Chapter 3.
- To upgrade from FactoryTalk AssetCentre version 2.2x (CPR 9 or CPR 9 SR 1) to version 2.31 (CPR 9 SR 1), follow the instructions in Chapters 4 through 6.



About the documentation set (or, Where do I start?)

The documentation set includes:

- **FactoryTalk AssetCentre Installation Guide** (Document ID FTAC-IN002D-EN-E). Use this manual to install the FactoryTalk AssetCentre system. This manual is also available on the FactoryTalk AssetCentre installation disc. The file name is FTAC-InstallGuide.pdf.
- **Online help.** Use the comprehensive online help for assistance while using the FactoryTalk AssetCentre system. For information about getting started, see the help topic Quick Start, on the Help menu.

About this book

This book is written for FactoryTalk AssetCentre administrators and IT professionals. To perform many of the tasks described in this book, you need to log on to the computers onto which you are installing software as an Administrator, or log on using an account that has administrative privileges. For those installing the FactoryTalk AssetCentre client software on a computer using the Windows Vista operating system, you can log on as a Windows Vista Limited User Account that has administrative privileges.

We assume you are familiar with:

- Microsoft® Windows® operating systems including basic Windows networking and administration tasks
- Microsoft SQL Server
- RSLinx™ communication software
- Rockwell Software programming tools for programmable logic controllers
- control networks such as DeviceNet and programmable logic controllers such as PLC-5® processors

Please use the feedback form, which you will find packaged with your software, to report errors and to let us know what information you would like to see added in future editions of this manual.

The components of FactoryTalk AssetCentre

There are three primary components of a FactoryTalk AssetCentre system:

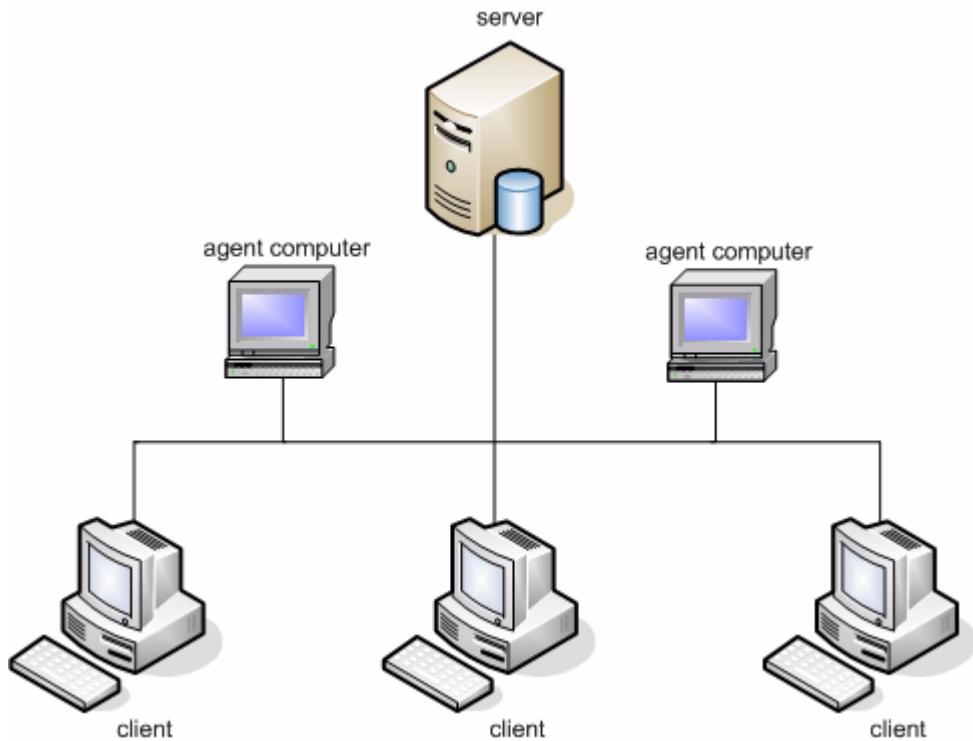
- **FactoryTalk AssetCentre server**, which controls the rest of the system and governs its operations. The server requires Microsoft SQL Server 2005 (SP1 or later) or Microsoft SQL Server 2000 (SP4 or later) to function. The SQL Server is typically on the same computer as the FactoryTalk AssetCentre server. The instructions in this

manual are written for that case, although the SQL Server could be installed on a different computer.

- **FactoryTalk AssetCentre clients**, which permit users to configure and use the server, view logged events, and perform other tasks associated with the software. The client can be installed on any computer that:
 - is capable of running the client software (see “Client and agent computer requirements” on page 6).
 - is connected to the FactoryTalk AssetCentre server.
- **FactoryTalk AssetCentre agents**, which are programs that perform certain scheduled operations, such as Disaster Recovery and searches. Agents run independently of the server and independently from each other—users schedule operations and the agents perform them at the scheduled time. By spreading the processing load over multiple computers, FactoryTalk AssetCentre agents speed up operations. When a server needs a scheduled operation to begin, it tries to locate an available computer running the appropriate agent to perform that task. When it locates an agent to perform the task, it assigns the task to that agent. When the agent has completed the task, the agent reports back to the server that the task is done.

Agents can be installed on any computer that:

- is capable of running the agent software (see “Client and agent computer requirements” on page 6).
- is connected to the FactoryTalk AssetCentre server.



When the system needs to run a schedule it searches the network for an available agent to perform that function.

System requirements

Server computer requirements

FactoryTalk AssetCentre server computers must meet the following minimum requirements. Note that FactoryTalk AssetCentre does not support 64-bit Windows operating systems. Only 32-bit versions of Windows operating systems are supported. The operating system can be in English, Portuguese, French, Spanish, Italian, German, Japanese, Korean, or Chinese.



Note that some FactoryTalk AssetCentre capabilities are only supported on an English language operating system. At this time, the Calibration Management capability requires an English language operating system.

Hardware	Software
<ul style="list-style-type: none"> ■ PC with 1.8 GHz or higher processor clock speed recommended. Intel Pentium/Celeron family, or AMD K6/Athlon/Duron family, or compatible processor recommended ■ 512 MB of RAM (more, depending on application requirements) ■ 3 GB of free hard disk space (more, depending on application requirements) ■ Graphics adapter capable of a minimum resolution of 1024 x 768 pixels ■ Keyboard and pointing device (mouse) ■ Network adapter card 	<ul style="list-style-type: none"> ■ Windows Vista (with Service Pack 1 or higher), supported for FactoryTalk AssetCentre clients only, or Windows XP Professional (with Service Pack 2 or higher) or Windows 2000 Professional (with Service Pack 4 or higher) or Windows 2000 Server (with Service Pack 4 or higher) or Windows Server 2003 Standard Edition (with Service Pack 1 or higher) ■ Microsoft Internet Explorer Web browser, version 6.0 or higher (version 7.0 recommended for Windows Vista operating systems) ■ Optional. RSLogix 5 or RSLogix 500 version 7.30 or higher, or RSLogix 5000 version 12 or higher, or any other version released as part of CPR 9 or CPR 9 SR 1.* ■ RSLinx Enterprise version 5.00.00 or higher if your system includes PanelView Plus operator interfaces** ■ FactoryTalk View ME for agents if your system includes PanelView Plus operator interfaces**

**To take advantage of security, the FactoryTalk AssetCentre client or agent should be installed on each computer running your RSLogix programming software.*

To take advantage of auditing, the FactoryTalk AssetCentre client should be installed on each computer running your RSLogix programming software.

For Disaster Recovery functions, the appropriate RSLogix programming software for your devices MUST be installed on the agent computer.

To edit the file and data settings for a compare operation for PLC-5, SLC 500, or MicroLogix processors, you must have RSLogix 5 or RSLogix 500 software installed on the client computer.

*** RSLinx Enterprise is included as part of the FactoryTalk AssetCentre install. FactoryTalk View ME is a separate installation, not included in FactoryTalk AssetCentre.*

Network requirements

Your Microsoft Windows network must use the TCP/IP protocol.

If you use a firewall, you must configure the firewall to permit traffic on the following ports:

This port:	is used for:
TCP port 25	SMTP mail
TCP port 80	Standard WWW port
TCP port 135	Remote Process Calls
TCP port 139	File and printer sharing
TCP port 445	File and printer sharing
TCP port 1433	Communications to SQL Server
TCP ports 7002 - 7004	FactoryTalk AssetCentre
UDP port 137	File and printer sharing
UDP port 138	File and printer sharing
UDP port 1434	Browsing for SQL Servers
UDP port 21060	Rockwell Automation Trace Diagnostics
UDP port 21061	Rockwell Automation Trace Diagnostics

Some of these ports may vary on your network. Work with your network administrators to determine the correct port numbers to open.

You may need to open ports for other Rockwell Automation products as well. See “Additional ports you may have to open” on page 85.

About the installation process

Installing FactoryTalk AssetCentre software is a multiple-part process.

1. Install the prerequisite software for the FactoryTalk AssetCentre server.
2. If you have purchased the Calibration Management capability, install the ProCalV5 server.
3. Install the FactoryTalk AssetCentre server.
4. Install FactoryTalk AssetCentre clients.
5. If you have purchased the Calibration Management capability, install the ProCalV5 clients.



6. Install FactoryTalk AssetCentre agents.
7. Configure users and security.
8. If you have purchased the Process Device Configuration capability, install DTMs.

The following chapters guide you through these tasks.

2

Converting an RSMACC system

This chapter explains the process for upgrading your RSMACC™ Change Management system to FactoryTalk AssetCentre. If you want to upgrade an RSMACC Network Health or Enterprise Online Condition Monitor (EOL) system, contact your local Rockwell Automation office. You must have RSMACC version 1.05 or later to upgrade to FactoryTalk AssetCentre.



Do not attempt to run any RSMACC components along with any FactoryTalk AssetCentre components on the same computer. This may lead to unexpected results.

The conversion path outlined in this chapter makes the following assumptions:

- That you are installing FactoryTalk AssetCentre for the first time. (That you did not have a test system running first, or that your test system is completely isolated from your production system.)
- That you are using the same client computers that you had with RSMACC. You may also be adding more client computers to the system.
- That you are installing the SQL database on the same computer as the FactoryTalk AssetCentre server software. (They can be installed on separate computers.)

About migrating the databases

RSMACC uses three databases to store data:

- Event and Audit
- Archive (only with the RSMACC Change Management solution)
- Diagnostics and Health (only with the RSMACC Network Health solution)

FactoryTalk AssetCentre combines these databases into one unified database (called *AssetCentre*). A database migration tool is provided with the FactoryTalk AssetCentre server software to make migration as easy as possible. Because the equivalent of the RSMACC Network Health solution is not included in FactoryTalk AssetCentre version 2.31, Diagnostics and Health information will only be logged if RSNetWorx MD is installed on your system. Otherwise, only the information imported from RSMACC will appear in the AssetCentre database.

When the Archive database is imported into FactoryTalk AssetCentre, the creation timestamp for imported labels reflects the time the asset was created (rather than the time the label was added). For example if a file in the RSMACC system was created on

7/18/2006 1:47PM, all the imported labels will show a date and time of 7/18/2006 1:47PM even though the labels were created some time after that. The imported Archive history and Audit trail correctly reflect the historic label creation date.

Migrating from RSMACC Change Management to FactoryTalk AssetCentre

During the migration process you will uninstall RSMACC, back up the RSMACC SQL databases, install FactoryTalk AssetCentre, and migrate the RSMACC databases to FactoryTalk AssetCentre. The steps below provide more detailed instructions. Be aware that there will be a period of time during the migration process during which no data will be logged to either the RSMACC databases or the FactoryTalk AssetCentre database.

1. Have all users check in their files to the RSMACC Archive module.
2. Optional. You may wish to purge old data that is no longer needed before continuing.
 - To purge old Archive data, use the RSMACC Archive Cleanup Utility in the RSMACC Archive Administration Utility. The RSMACC Archive Administration Utility can be found in the Rockwell Software > RSMACC Server program group on your RSMACC server computer. For instructions, see the online help in the RSMACC Archive Administration Utility.
 - To remove old data from the RSMACC Event and Audit database, use the RSMACC Event and Audit Database utility. The RSMACC Event and Audit Database utility can be found in the Rockwell Software > RSMACC Server program group on your RSMACC server computer. For instructions, see the online help in the RSMACC Event and Audit Database utility.
3. Optional. You may wish to make notes on the schedules that you have set up in the RSMACC Verification module. These schedules will not migrate over to FactoryTalk AssetCentre and will have to be recreated.
4. Shut down the RSMACC client software as well as other Rockwell Automation software such as RSLogix 5 on all RSMACC client computers.
5. Use the Windows Add or Remove Programs utility to uninstall the RSMACC client and related software from the RSMACC client computers and from the RSMACC server if you have it installed there. Uninstall the software in the following order:
 - a. Uninstall the RSMACC Change Management Client software.
 - b. Uninstall the RSMACC Client Core software.
 - c. Uninstall the Security Server Client software. If you have other products that still use RSSecurity, you can install the RSSecurity Emulator. For help on installing the RSSecurity Emulator, refer to the RSSecurity Migration help, which can be found



via the Help button in the Import RSecurity Configuration tool. The Import RSecurity Configuration tool can be found in the Rockwell Software > FactoryTalk Tools program group.



From this point, until step 10, no event, audit, or device health information will be logged. If a user were to open a Rockwell Software program, for example to make edits to a ladder logic program, no event or audit information would be logged.

6. On the RSMACC server computer, stop and disable the following services:
 - RSMACC Verification Service
 - RSMACSM (the Service Monitor Service)
7. Uninstall RSMACC server software from all computers on which it resides.
 - a. Uninstall the RSMACC Verification Module.
 - b. Uninstall the RSMACC Change Management Module Server.
 - c. Uninstall the RSMACC Server.
8. Using Microsoft SQL Server 2000 Enterprise Manager, back up your RSMACC databases. (See your Microsoft SQL Server 2000 documentation for information about backing up databases.)
9. Optional. If upgrading your Microsoft SQL Server software, do that now.
10. Install FactoryTalk AssetCentre as instructed in:
 - Chapter 4 “Installing the FactoryTalk AssetCentre server” beginning on page 17.
 - Chapter 5 “Installing FactoryTalk AssetCentre clients” beginning on page 41.
 - Chapter 6 “Installing FactoryTalk AssetCentre agents” beginning on page 53.

The FactoryTalk AssetCentre system is now logging system events and audits.

11. Migrate the RSMACC databases to the FactoryTalk AssetCentre database. On the FactoryTalk AssetCentre server computer, select **Start > All Programs > Rockwell Software > FactoryTalk AssetCentre Server > Database Migration Wizard**. Follow the instructions in the wizard to migrate the data.

For the Event, Audit, and Diagnostics and Health databases, migrated data simply shows up in the logs in the FactoryTalk AssetCentre client along with new data. For the RSMACC Archive database, migrated data is displayed in a separate folder in the asset tree in FactoryTalk AssetCentre. One of the first things you’ll do in FactoryTalk AssetCentre is to set up the asset tree to represent your plant. To incorporate the migrated data into your newly designed asset tree, see step 15 on page 14.

12. Use the FactoryTalk Administration Console to configure users and computers for FactoryTalk AssetCentre and to set feature security. See Chapter 7, “Configuring FactoryTalk AssetCentre” beginning on page 67.



Never explicitly deny rights to the All Users or Administrators group in FactoryTalk. Rather, set up specific user groups of your own and deny rights to those groups. Denying rights to the All Users or Administrators groups could lock everyone including administrators out of the system or remove the ability to modify security settings. This could also deny rights in all FactoryTalk-enabled products using FactoryTalk Services Platform version 2.00 (CPR 7), version 2.10.00 (CPR 9), or version 2.10.01 (CPR 9 SR 1).

13. Migrate and remove RSSecurity Server. See the RSSecurity Migration online help for instructions.
 - a. Backup the RSSecurity database.
 - b. On the FactoryTalk Directory computer use the Import RSSecurity Configuration tool to import your RSSecurity database into the FactoryTalk Directory. The Import RSSecurity Configuration tool can be found in the Rockwell Software > FactoryTalk Tools program group.
 - c. If you have other products that still require RSSecurity, you can install the RSSecurity Emulator. For help on installing the RSSecurity Emulator, refer to the RSSecurity Migration help, which can be found via the Help button in the RSAssetSecurity Import tool.
 - d. Use Add or Remove Programs to uninstall Security Server Network Edition.
14. Use the instructions in the online help to set up the asset tree (design it and add assets) in the FactoryTalk AssetCentre client software. You can use any client in the system to do this.
15. Associate device files formerly stored in the RSMACC Archive module with devices in the asset tree in FactoryTalk AssetCentre. When you migrated the RSMACC database, a folder called “File Repository (Imported from RSMACC)” was added to the asset tree. This folder contains all the files and folders that you had in the RSMACC Archive module. For each device in the tree, move the associated files from the imported File Repository folder to the device in the asset tree. Then open the device’s properties and specify that file in the Configuration Data field. See the online help for detailed instructions on editing an asset’s properties.
16. Recreate the schedules that you had set up in RSMACC. For instructions, in the FactoryTalk AssetCentre client select **Help > Contents** and open the **Schedules - Disaster Recovery** book.

3

Upgrading FactoryTalk AssetCentre from v. 2.00 (CPR 7) to v. 2.31 (CPR 9 SR 1)

This chapter provides instructions for upgrading from FactoryTalk AssetCentre version 2.00 (CPR 7) to version 2.31 (CPR 9 SR 1). To upgrade from FactoryTalk AssetCentre version 2.2x (CPR 9 or CPR 9 SR 1) to version 2.31 (CPR 9 SR 1), follow the instructions in Chapters 4 through 6.

FactoryTalk AssetCentre v. 2.31 relies on FactoryTalk Services Platform 2.10.00 or 2.10.01. To upgrade FactoryTalk AssetCentre, you must also upgrade from FactoryTalk Automation Platform 2.00. This is automatically taken care of in the FactoryTalk Services Platform portion of the FactoryTalk AssetCentre installation. Other FactoryTalk-enabled products must also be upgraded to their CPR 9 versions. A list of products requiring an upgrade is provided during the FactoryTalk Services Platform installation.

When you upgrade a computer from FactoryTalk Automation Platform 2.00 (CPR 7) to FactoryTalk Services Platform 2.10.00 (CPR 9) or 2.10.01 (CPR 9 SR 1), the installation process automatically creates a backup of your existing FactoryTalk Directory configurations. If something goes wrong during the installation, you can restore the system from this backup. Information about the location of the backup files is provided during installation.

In addition, while the installation process updates each directory with support for new policy settings and new features, it leaves your original directory configurations intact. It does not change your existing policy or security settings. For details, see FactoryTalk Security Help.

Upgrading to CPR 9 SR 1



It is very important that FactoryTalk AssetCentre 2.00 be removed from ALL client and agent computers BEFORE uninstalling the FactoryTalk AssetCentre 2.00 software from the server.

To upgrade FactoryTalk AssetCentre:

1. Uninstall FactoryTalk AssetCentre from the clients and agents using Add or Remove Programs from the Windows Control Panel.

On this computer...	Remove these components...
----------------------------	-----------------------------------

Clients	FactoryTalk AssetCentre Client FactoryTalk AssetCentre Common Components
---------	---

On this computer...	Remove these components...
Agents	FactoryTalk AssetCentre Agent FactoryTalk AssetCentre RA Disaster Recovery Agent FactoryTalk AssetCentre Common Components

2. Uninstall FactoryTalk AssetCentre from the server using Add or Remove Programs from the Windows Control Panel.

On this computer...	Remove these components...
Server	FactoryTalk AssetCentre Server FactoryTalk AssetCentre Common Components

3. Install FactoryTalk AssetCentre according to the instructions in Chapters 4 through 6. During the FactoryTalk Services Platform portion of the installations, FactoryTalk will be upgraded and a message will inform you of other Rockwell Software products that rely on FactoryTalk Services Platform and need to be updated.
4. Upgrade your other FactoryTalk-enabled products according to the instructions provided with each product.

4

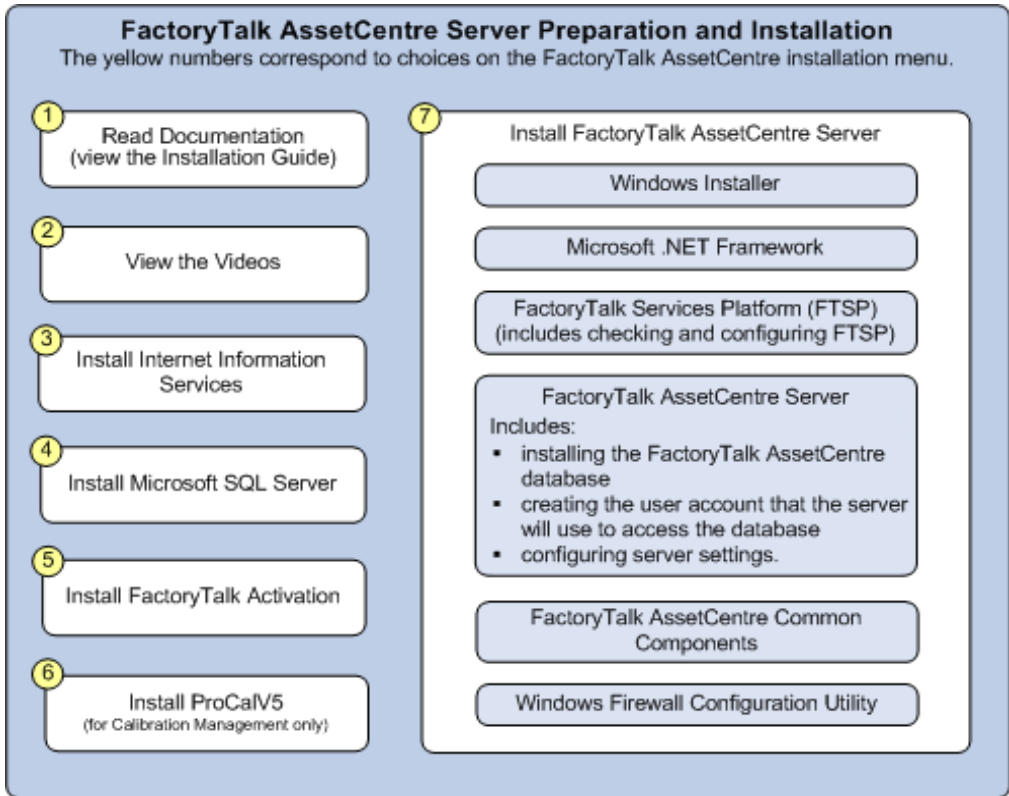
Installing the FactoryTalk AssetCentre server

If you have an RSMACC system, read Chapter 2, “Converting an RSMACC system,” before continuing.



IMPORTANT: If you are using a firewall (such as the Windows Firewall), you must manually permit **File and Printer Sharing** through your firewall. Consult the documentation for your firewall software for instructions. You must also open Port 80 (or whatever port is used for HTTP).

Setting up the FactoryTalk AssetCentre server requires installing and configuring several software packages. These are listed on the FactoryTalk AssetCentre installation menu. The server installation step in the menu launches a series of software installations and utilities as illustrated in the diagram below. The yellow numbers in the diagram show the order of the steps.



For information on installing this software:	See page:
3) Microsoft Internet Information Services (IIS), version 5.0 or higher	19
4) Microsoft SQL Server 2005 SP 1 or higher (recommended) or Microsoft SQL Server 2000 SP 4 or higher	20 81
5) FactoryTalk Activation	24
6) ProCalV5 software (for the Calibration Management capability)	28
7) FactoryTalk AssetCentre server software	29



Installing Internet Information Services

Microsoft Internet Information Services (IIS) is provided with Windows 2000 Server and Windows Server 2003. However, it is not installed by default. You must install this software on the server before installing FactoryTalk AssetCentre server software.

You may want to run Windows Update to make sure you have the most recent IIS patches before proceeding.

To install IIS:

1. Log on to the FactoryTalk AssetCentre server computer as an administrator (or a user with administrative privileges).
2. Click **Start > Settings > Control Panel** to display the Windows Control Panel.
3. In the Control Panel, open **Add or Remove Programs**.
4. In the Add or Remove Programs application, click the **Add/Remove Windows Components** icon. This starts the Windows Components Wizard.
5. **For Windows Server 2003:** In the Windows Components Wizard, click **Application Server**, and then click **Details**. Select the box for **Internet Information Services (IIS)**. Click **Internet Information Services (IIS)**, and then click **Details**. Make sure the following boxes are checked, and then click **OK**.
 - Common Files
 - Internet Information Services Manager
 - SMTP Service (if you do not have another mail server that you are going to use)
 - World Wide Web Service

(If these boxes are already checked, cancel out of the Windows Components Wizard. IIS is already installed.)

For Windows 2000 Server: In the Windows Components Wizard, select the box next to **Internet Information Services (IIS)**.

Click **Internet Information Services (IIS)**, and then click **Details**. Make sure the following boxes are checked, and then click **OK**:

- Common Files
- Internet Information Services Snap-In
- Internet Services Manager (HTML)
- SMTP Service (if you do not have another mail server that you are going to use)

■ World Wide Web Server

(If the appropriate boxes are already checked, click **Cancel**. IIS is already installed.)

6. Click **Next**. Windows installs IIS. Windows may prompt you to insert your operating system disc during the installation.

*Optional: If you want to use a web site other than the “Default Web Site” for IIS, create that web site now in Computer Management. Right-click **My Computer**, select **Manage** or **Administrative**, then, under Services and Applications, click **Internet Information Services (IIS) Manager**. For more information, see your Windows Server documentation.*

Installing Microsoft SQL Server 2005

If you are converting from an RSMACC system, see Chapter 2, “Converting an RSMACC system,” for the proper procedure. That chapter directs you to install SQL Server 2005 at the appropriate time.

FactoryTalk AssetCentre uses a Microsoft SQL Server database to store project files and user data. We recommend Microsoft SQL Server 2005 (Enterprise or Standard) for use with FactoryTalk AssetCentre, although you can use Microsoft SQL Server 2000. If you wish to install SQL Server 2000 instead, see Appendix A on page 81.

You may install SQL Server on the FactoryTalk AssetCentre server computer or on a separate server computer. If you already have SQL Server 2005 installed, you can skip these steps (however, you may need to reconfigure the SQL Server).



If you use an existing SQL Server installation:

The SQL Server collation must be dictionary-order, case-insensitive for use with FactoryTalk AssetCentre software. If your existing SQL Server collation is case-sensitive, the FactoryTalk AssetCentre database installation will fail. Follow the directions here if your SQL Server collation is NOT dictionary-order, case-insensitive.

- If this SQL Server has no other databases on it:

Either: Uninstall SQL Server and reinstall it using the default collation in the setup program. (This statement applies to English language Microsoft Windows operating systems and SQL Server software. For other languages, be sure to select a dictionary-order, case-insensitive collation when reinstalling.)

Or: Rebuild the master database using a dictionary-order, case-insensitive collation. Refer to the SQL Server 2005 online books for instructions.

- If this SQL Server has other databases on it, then setup or use another SQL Server that is configured with a dictionary-order, case-insensitive collation.

If you have an MSDN subscription you can find more information at <http://msdn2.microsoft.com/en-us/library/ms143508.aspx>, or search the Microsoft MSDN site for SQL Server 2005 collation settings.

To install SQL Server 2005 so it is compatible with FactoryTalk AssetCentre server:

1. Log on to the server computer as an administrator or as a user with administrative rights.



It is possible to install SQL Server 2005 on a different computer from the one on which you install the FactoryTalk AssetCentre server software.

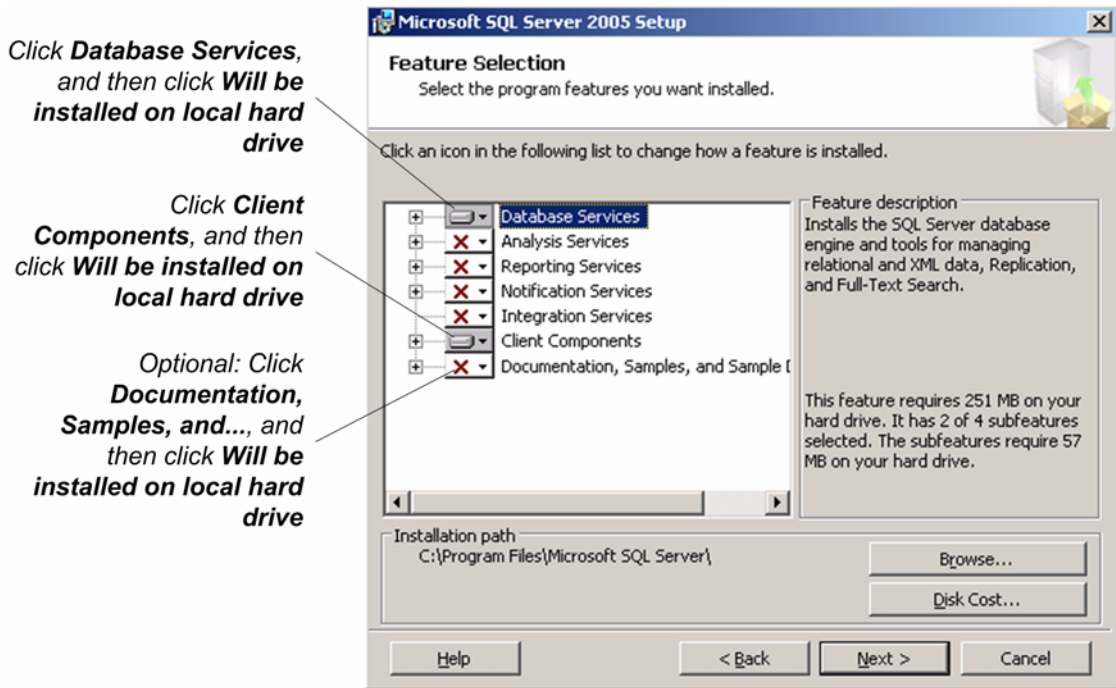
2. Start the SQL Server 2005 installation from the SQL Server 2005 discs.
3. Follow the on-screen instructions for installation until you get to the **Components to Install** screen.
4. The Components to Install screen asks which components of SQL Server 2005 you want to install. If you like, or if your business requires you to do so, you may install the complete SQL Server 2005 installation.

If you want to install only those components necessary to run the FactoryTalk AssetCentre server:

- a. Click the **Advanced** button. This displays the Feature Selection screen.

- b. On the Feature Selection screen, click the icon for **Database Services**, and then click **Will be installed on local hard drive**. Click the icon for **Client Components**, and then click **Will be installed on local hard drive**.

You may also want to install the documentation component. The other icons should have a red X indicating that they will not be installed.



- c. Click the plus sign next to **Database Services**. Make sure the following are set to install on the local hard drive:
- Data Files
 - Replication
 - Full-Text Search
 - Shared Tools
- d. Click the plus sign next to **Client Components**. Make sure the following are set to install on the local hard drive:
- Connectivity Components
 - Management Tools
 - SQLXML Client Features
 - Legacy Components

- e. Optional. Click the plus sign next to **Documentation, Samples, and ...**. Make sure **SQL Server Books Online** is set to install on the local hard drive.
 - f. Click **Next**.
5. The Services Accounts window of the installation program asks how you want to run the services for the SQL Server. Select **Use the built-in System account** and select **Local System** from the associated list.



You can run the SQL Server using a domain account. This can, however, complicate system maintenance (for instance, when changing passwords). If you are not sure of the type of account you should use for running the SQL Server, consult your network administrator.

6. In the Authentication Mode window, click **Mixed Mode (Windows Authentication and SQL Server Authentication)**. This means that both the SQL Server and the Windows domain can authenticate users for the SQL Server.

FactoryTalk AssetCentre uses SQL Server authentication.

When you click Mixed Mode, fields open for entering the password for the sa (SQL Server system administrator) account password. **Do not forget the password.** You will need this password when you install the FactoryTalk AssetCentre server.



Do not leave the password blank. Doing so leaves your SQL Server and your computer open to attack.

7. In the Collation Settings window, select **SQL collations** and then the dictionary-order, case-insensitive collation option.



The collation settings must be case-insensitive! If the settings are case-sensitive, the FactoryTalk AssetCentre database installation will fail.

8. Follow the on-screen instructions to complete the installation.



After you install Microsoft SQL Server 2005, you **must install SQL Server 2005 Service Pack 1 (or higher)**! See below.

Installing Microsoft SQL Server 2005 Service Packs

After you install Microsoft SQL Server 2005, you **must** install SQL Server 2005 Service Pack 1 or higher. The service pack is necessary for the software to run properly and protects your SQL Server 2005 server from certain types of attacks.

To obtain the service pack, go to the Microsoft website, www.microsoft.com, and search for “SQL Server 2005 Service Pack.”

Minimum Microsoft SQL Server 2005 Permissions

The AssetCentreUser SQL user’s default database value can be “master” or “AssetCentre.” By default, the database value is set to “AssetCentre.” The AssetCentreUser SQL user needs to belong to the following AssetCentre database roles:

- db_dataexecute
- db_datareader
- db_datawriter
- public

The “db_dataexecute” database role is added to the FactoryTalk AssetCentre database at install time. It is used to group Execute permissions of stored procedures and functions within the AssetCentre database.

All of the user stored procedures and user functions in the FactoryTalk AssetCentre database need to have the Execute permission granted to the “db_dataexecute” database role.

Installing FactoryTalk Activation

FactoryTalk AssetCentre software uses a software activation system called FactoryTalk Activation and is activated on two criteria: capacity (number of devices) and capability (purchased functions). Activation is required for the FactoryTalk AssetCentre server, but not clients or agents.

- **Capacity** is the number of device assets that can be represented in your FactoryTalk AssetCentre software.

By default (and without activation), you are permitted to add up to ten devices or process devices in your FactoryTalk AssetCentre software. Above that, the number of devices and process devices you are permitted depends on the quantity of capacity activation you have purchased. Only device and process device assets count for capacity activation. You can add as many files, folders, file links, generic devices, and generic containers as your system requires.

- **Capabilities** are additional features you can add to enhance your FactoryTalk AssetCentre system.

Currently, the capabilities for purchase are:

- Calibration Management
- Process Device Configuration



- Disaster Recovery for Rockwell Devices
- Disaster Recovery for ABB Robots
- Disaster Recovery for Motoman Robots
- Disaster Recovery for FANUC Robots

All of the other features of FactoryTalk AssetCentre are available by default. Other capabilities will be available in future releases.

FactoryTalk AssetCentre clients do not require activation. All activations for FactoryTalk AssetCentre are locked to the FactoryTalk AssetCentre server. If you add activations to the system in the future, you will have to refresh activation.

To refresh activation:

1. On any computer with the FactoryTalk AssetCentre client software, select **Help > About**.
2. In the Components list, select **FactoryTalk AssetCentre Server Features**, and then click **Refresh**.

For more detailed information about activation for FactoryTalk AssetCentre, see the online help. For more information about FactoryTalk Activation, see the “Activate Rockwell Software Products” insert that came with your FactoryTalk AssetCentre software or the online help for the FactoryTalk Activation tool.



You need an Internet connection to install activation. If you do not have an internet connection, see the “Activate Rockwell Software Products” insert that came with your software.

Installing the FactoryTalk Activation server and activating the software

The FactoryTalk Activation system uses an activation server to store and manage client activations. You do not have to install the FactoryTalk Activation server on the same computer that will run the FactoryTalk AssetCentre server.

If you already have a FactoryTalk Activation server in your facility, you can use that server to activate FactoryTalk AssetCentre. If you use an existing FactoryTalk Activation server, skip to “Installing the FactoryTalk Activation client and activating the software” on page 27.



If you already have FactoryTalk Activation server CPR 9 installed on your computer and you want to upgrade it to CPR 9 SR1, you are given the option to upgrade it in the steps that follow. FactoryTalk AssetCentre works with both versions; your choice on whether to upgrade will depend on the version requirement of other software you may be using that requires FactoryTalk Activation.

To install the FactoryTalk Activation server:

1. Log on to the computer on which you want to install the software as an administrator (or a user with administrative privileges).
2. Insert the FactoryTalk AssetCentre disc into your computer.
3. The installation program should start automatically. If it does not, open the FactoryTalk AssetCentre disc in My Computer and then run the **Setup.exe** program.
4. Click **Install FactoryTalk AssetCentre v. 2.31.00 CPR9 SR1**.
5. Click **Install FactoryTalk Activation Components**.
6. Click **Install FactoryTalk Activation Server 3.01 (CPR 9 SR 1)**. Follow the on-screen instructions to complete the server installation.
7. If the InstallShield Wizard prompts you to install HASP USB dongle drivers, click **Install** to install the drivers. Follow the on-screen instructions.
8. Continue following the instructions on the screen to complete the FactoryTalk Activation server installation.
9. When the FactoryTalk Activation server installation is complete, follow the on-screen instructions to obtain an activation.
10. When you open the Activation Wizard, you will proceed differently depending on whether you are installing the FactoryTalk Activation server on the FactoryTalk AssetCentre server computer or on a separate computer.
 - If installing on separate computers, when the Activation Wizard opens, click **Cancel** and exit both the wizard and the FactoryTalk Activation tool. Skip the remaining steps below and go to “Installing the FactoryTalk Activation client and activating the software” on page 27.
 - If installing on the same computer, continue following the steps below.
11. If you have a dongle, attach it to the USB port of your computer. (FactoryTalk Activation requires a specific USB dongle available from Rockwell Automation. The part number is 9509-USBDONG.)
12. In the Activation Wizard, select the **Use the Expert Interface to activate multiple products** check box on the first screen. This will allow you to get all the activations



you need for FactoryTalk AssetCentre at once: server activation, capacity activation, and capability activations (such as Disaster Recovery for Rockwell Devices).



Do not lock activations to virtual network adapters, such as those used for virtual private networks (VPN) or virtual machines. Instead, lock activations to the Host IDs of fixed hardware devices, such as hardware network adapters or hard disk serial numbers.

13. Continue following the instructions in the wizard to obtain your activations.

Installing the FactoryTalk Activation client and activating the software

FactoryTalk AssetCentre must be activated before you can use it. (For information on how activation works with FactoryTalk AssetCentre, see “Installing FactoryTalk Activation” on page 24.) Activation takes place through the FactoryTalk Activation client software.

If you...	Then...
have installed the FactoryTalk Activation server software on your FactoryTalk AssetCentre server computer	you do not need to install the FactoryTalk Activation client. It was installed with the server.
have installed the FactoryTalk Activation server on a different computer than your FactoryTalk AssetCentre server computer	you need to install the Activation client on the FactoryTalk AssetCentre server computer. Proceed with the steps below.
<p>already have the correct version of the FactoryTalk Activation client on your FactoryTalk AssetCentre server computer.</p> <p>(If you have already installed the correct version of the client, the Welcome screen of the FactoryTalk Activation client installation program will say, “The InstallShield(R) Wizard will allow you to modify, repair, or remove FactoryTalk Activation client.” If you see those options, you can cancel the installation.)</p>	<p>you do not need to install it again. Open the Activation Wizard to activate your software. To open the Activation Wizard:</p> <ul style="list-style-type: none"> ■ Run the FactoryTalk Activation Tool from the Rockwell Software > FactoryTalk Activation program group. ■ Select the Get Activations tab. ■ Click Open Activation Wizard.

To install the FactoryTalk Activation client:

1. Log on to the computer on which you want to install the software as an administrator (or a user with administrative privileges).
2. Insert the FactoryTalk AssetCentre disc into your computer.

3. The installation program should start automatically. If it does not, open the FactoryTalk AssetCentre disc in My Computer and then run the **Setup.exe** program.
4. Click **Install FactoryTalk AssetCentre v. 2.31.00 CPR9 SR1**.
5. Click **Install FactoryTalk Activation Components**.
6. Click **Install FactoryTalk Activation Client 3.01 (CPR 9 SR 1)**. Follow the on-screen instructions to complete the client installation.
7. If the InstallShield Wizard prompts you to install HASP USB dongle drivers, click **Install** to install the drivers. Follow the on-screen instructions.
8. Continue following the instructions on the screen to complete the FactoryTalk Activation client installation.
9. When the FactoryTalk Activation client installation is complete, follow the on-screen instructions to obtain an activation.
10. When you open the Activation Wizard, use the wizard to obtain your FactoryTalk AssetCentre activations. Because you most likely need multiple activations for FactoryTalk AssetCentre (server activation, capacity activation, and capability activation), select the **Use the Expert Interface to activate multiple products** check box on the first screen of the Activation Wizard.



Do not lock activations to virtual network adapters, such as those used for virtual private networks (VPN) or virtual machines. Instead, lock activations to the Host IDs of fixed hardware devices, such as hardware network adapters or hard disk serial numbers.

11. Continue following the instructions in the wizard to obtain your activations.

Installing ProCalV5 server software

If you have purchased the Calibration Management capability for FactoryTalk AssetCentre, you next install the ProCalV5 server software on the FactoryTalk AssetCentre server computer. This step comes after you have installed IIS, the Microsoft SQL Server software, and FactoryTalk Activation.



You can also install the ProCalV5 server software after the FactoryTalk AssetCentre server software as described on page 38.

1. Insert the FactoryTalk AssetCentre disc into your computer.
2. The installation program should start automatically. If it does not, open the FactoryTalk AssetCentre disc in My Computer and then run the **Setup.exe** program.



3. Click **Install FactoryTalk AssetCentre v. 2.31.00 CPR9 SR1**.
4. Click **Install ProCalV5**.
5. Click **Product Documentation** on the ProCalV5 install screen.
6. In the window that opens, open the **Installation Guide** folder.
7. Open and review the *ProCalV5 Installation Guide*. Use Microsoft Word to read the guide. Close the window.
8. Click **Server Setup**.
9. Follow the on-screen instructions for the installation.
10. After you install the ProCalV5 server, the ProCalV5 Server Setup window opens. This step installs the database connection for ProCalV5. Specify the SQL Server that you set up previously, and enter the **sa** (SQL Server system administrator account) user name and password.
11. Click **Connect**.
12. The ProCalV5 Server Setup window expands. Provide this information:
 - The name of the ProCalV5 SQL database (default is PROCAL55RS).
 - The ProCalV5 database login name (default is pcV5us01) and password.
13. Click **Load Database**, and continue to follow the on-screen instructions.

Installing FactoryTalk AssetCentre server software

FactoryTalk AssetCentre works with either FactoryTalk Services Platform 2.10.00 (CPR 9) or 2.10.01 (CPR 9 SR 1). If you already have the CPR 9 version installed, you do not need to reinstall FactoryTalk Services Platform. If you do not have FactoryTalk Services Platform installed, FactoryTalk AssetCentre will install the CPR 9 SR 1 version.

If you already have the CPR 9 version of FactoryTalk Services Platform installed and you wish to upgrade to the CPR 9 SR 1 version, you must manually upgrade it from the FactoryTalk AssetCentre installation disc, as described on page 2. We recommend that you perform the upgrade before you begin installing the FactoryTalk AssetCentre server.



If you are also installing the FactoryTalk AssetCentre client or agent on the server computer, and you want to use the CPR 9 SR 1 version of RSLinx Enterprise, you must also use the CPR 9 SR 1 version of FactoryTalk Services Platform.

If you already have version 2.21 or 2.21.01 of FactoryTalk AssetCentre server installed, you will be given the option to upgrade to version 2.31 during the installation process.

To install the FactoryTalk AssetCentre server software:

1. Log on to your server computer as an administrator or as a user with administrative privileges.
2. Insert the FactoryTalk AssetCentre installation disc into your computer.
3. The setup program should start automatically. If it does not, open the FactoryTalk AssetCentre disc in My Computer and then run the **Setup.exe** program.
4. Click **Install FactoryTalk AssetCentre v. 2.31.00 CPR9 SR1**.
5. Click **Install FactoryTalk AssetCentre Server**.

The Install FactoryTalk AssetCentre Server window opens. The installer searches the computer for required components and displays the results in this window. The installer will not attempt to install components that already exist on the computer. Components that will be installed are indicated with a computer icon and a checked box. You cannot select or clear the check boxes in this window.



If you see a red "X" next to one or more components, this means that the installer cannot determine whether the component should be installed. Contact Technical Support using the contact information provided on the copyright page at the beginning of this guide.

6. Click **Start** to begin the installation process.
7. Follow the on-screen installation instructions for the components that need to be installed. The following sections provide more information about installing these components.



The installation of some components may require you to restart your computer. If this is the case and the setup program has not finished installing all of the necessary components, the setup program will restart the next time you log on to your computer.

The following components are checked for and installed or configured during the server installation:

- **Windows Installer 3.1 v2.**
- **Microsoft .NET Framework.** The FactoryTalk AssetCentre server requires that Microsoft .NET Framework versions 1.1 (with Service Pack 1) and 2.0 be installed on your computer. If these components are not already installed on your computer, the setup program will install them.
- **FactoryTalk Services Platform 2.10.00 or 2.10.01 (CPR9 or CPR9 SR1).** See "Installing FactoryTalk Services Platform," next.
- **Check and Configure FTSP.** This occurs during the FactoryTalk Services Platform installation. See the substeps in step 4 on page 32.



- **FactoryTalk AssetCentre Server.** See “FactoryTalk AssetCentre server installer” on page 32.
- **FactoryTalk AssetCentre Setup Programs.** See “FactoryTalk AssetCentre Client Package installer” on page 35.
- **FactoryTalk AssetCentre Common Components.** See “FactoryTalk AssetCentre Common Components installer” on page 35.
- **FactoryTalk AssetCentre Calibration Management Server.** See “FactoryTalk AssetCentre Calibration Management Server installer” on page 36.
- **FactoryTalk AssetCentre Process Device Configuration Server.** See “FactoryTalk AssetCentre Process Device Configuration Server installer” on page 37.
- **Launch Rockwell Windows Firewall Configuration Utility.** See “Using the Windows Firewall Configuration Utility” on page 37.

Installing FactoryTalk Services Platform

See “Installing FactoryTalk AssetCentre server software” on page 29 for the steps to get to this part of the installation.

FactoryTalk AssetCentre depends on the Rockwell Software FactoryTalk Services Platform to function. If the platform is not installed on your computer (or if the correct version is not installed), the setup program will install it. If you have a previous version of the platform installed, you may need to uninstall it before continuing (the setup program will inform you if this is the case).



By default, all members of the Administrators group on the computer on which you are installing the FactoryTalk Services Platform are added to the Administrators group in the FactoryTalk Directory.

1. Follow the on-screen instructions to install the platform. If FactoryTalk Services Platform 2.10.00 or 2.10.01 is already installed on your computer, go to step 4.
2. When you are asked whether you want to install the FactoryTalk Administration Console, be sure the check box is selected (you will need the console to help you configure the FactoryTalk Directory). Continue to follow the on-screen instructions.
3. Click **Finish** on the InstallShield Wizard for FactoryTalk Services Platform.



Respond to the FactoryTalk Directory Server Configuration window, explained in step 4, with care. Correctly identifying the FactoryTalk Directory is essential to a properly functioning system.

4. The FactoryTalk Directory Server Configuration window asks if the computer on which you are installing the software is also the computer that will be the FactoryTalk Directory server. If this is the case, click **Continue** and go on to step 5. If the FactoryTalk Directory server is on a different computer, click **Select FactoryTalk Directory Server** and continue with the instructions below.
 - a. The utility may ask you to log on to FactoryTalk. Log on with your Windows administrator username and password. (As mentioned earlier, members of the Windows Administrators user group were automatically added to the FactoryTalk Directory.)
 - b. In the FactoryTalk Directory Server Location Utility window, note the name in the **Computer hosting directory server** field. (Most likely, this field will contain *localhost*, which is correct only if you are using the computer that actually is the FactoryTalk Directory Server.) If the name in the field is not the name of your FactoryTalk Directory Server, click the browse button next to the field.
 - c. In the next window, select **Remote computer**. Type the name of your FactoryTalk Directory Server in the field, or click the browse button next to the field to browse for the server.
 - d. Once you have the name of the FactoryTalk Directory Server in the field, click **OK**, and then click **OK** again.
 - e. If you chose a different computer to be the FactoryTalk Directory Server, you will see a window saying that you will need to restart your computer. Click **OK**. The software attempts a connection to the FactoryTalk Directory Server. You may be asked to log on to the server. If you are, **enter the username and password for a Network Directory server administrator on the FactoryTalk Directory Server**, and then click **OK**.
5. When you see a checklist window showing that the FactoryTalk Services Platform components were all installed and configured, click **Continue**. This will proceed to the next segment of the FactoryTalk AssetCentre server installation.

FactoryTalk AssetCentre server installer

See *"Installing FactoryTalk AssetCentre server software"* on page 29 for the steps to get to this part of the installation.

After the setup program checks your FactoryTalk Services Platform installation, it starts the installation for the FactoryTalk AssetCentre server software.



If you have a firewall (such as the Windows Firewall) installed on your server computer, you may see warnings that the Scheduler Service and trace diagnostics are being blocked. For FactoryTalk AssetCentre to function correctly, you must unblock traffic for these services.



To install the FactoryTalk AssetCentre server:

1. Follow the on-screen instructions.
2. If you have created another web site for IIS (see page 20), you will see a Select Web Site dialog box. Select the web site you want to use, and then click OK.
3. The **Database Installer** utility opens. This utility installs the FactoryTalk AssetCentre database. Specify the location of the database server and the SQL Server administrator username and password.



If you see an error message about invalid SQL collation, you will need to fix the SQL Server collation before continuing with the FactoryTalk AssetCentre installation. See “SQL collation error encountered during database installation” on page 73.

- a. By default, the server location is set to **(local)**. There are instances where this is not the correct setting.

If you installed the SQL Server software here	Then enter this in the Server field
In the default location (the computer running the FactoryTalk AssetCentre server software) and default (local) instance.	Leave the setting as it is (local).
On a different computer than will run the FactoryTalk AssetCentre server software but in the default (local) instance.	The name or IP address of the computer on which you installed the SQL Server.
On a named instance of SQL Server (whether or not you installed the SQL Server on the same computer where you are installing the FactoryTalk AssetCentre server software).	The name or IP address of the server and the instance where you installed the SQL Server. For example, if you installed the database on a computer called MYSERVER and named the instance MYINSTANCE, you would type MYSERVER\MYINSTANCE in the field.

- b. For the user credentials, the utility is looking for the system administrator account (sa) you created when you installed the SQL Server. Type **sa** in the **Username** field, and the password for the sa account in the **Password** field. If someone else installed SQL Server, get the correct administrator username and password.
- c. Click **Start**.

FactoryTalk AssetCentre installs the database.

4. The **Database User Configuration** utility opens. Create a database user for the FactoryTalk AssetCentre software to use to access the database.
 - a. You can accept the information provided or enter a different username and password, then click **OK**.
 If you provide a username and password, provide a SQL user account, not a Windows user account.
 - b. After you click **OK**, if the software asks if you want to create a new login for the database, click **Yes**.
 - c. After running the Database User Configuration utility, the software may ask you to log on to FactoryTalk. If so, log on using a FactoryTalk Administrator account.
5. The **Configure Server Settings** utility opens. Configure the port and e-mail settings that specify how the FactoryTalk AssetCentre Server software communicates with other computers.

This setting:	Does this:
Server Location	Sets the name of the FactoryTalk AssetCentre server computer. Change this setting only if you want to move the server to another computer.
Base IP Port	Sets the Internet Protocol (IP) port that the FactoryTalk AssetCentre Scheduler Service will use. By default, this port is 7002. The system uses the base port, plus the next two consecutive ports. So by default 7002 to 7004 are reserved. If you specify 7000, for example, 7000 through 7002 would be reserved.
SMTP Server	Specifies the SMTP (Simple Mail Transport Protocol) address of your outgoing SMTP (e-mail) server. For example, mailrelay.myplant.com. The domain provided here (myplant.com in the example above) is used to form the address from which e-mail notifications from FactoryTalk AssetCentre will be sent. The “From” e-mail address will be FACTORYTALKASSETCENTRE_NOREPLY@yourdomain.com. If you do not know the name of your SMTP server, consult your network administrator.
SMTP Server IP Port	Sets the IP port used to communicate with your SMTP server. By default, this port is 25. Some facilities use a different port. If you do not know your SMTP port number, consult your network administrator. If you use a port other than 25 and are using a firewall, you’ll have to also open that port in your firewall.

6. When the settings are as desired, click **OK**.



7. If you see messages indicating that the firewall has blocked a program, select **Unblock** on each message.
8. On the final page of the FactoryTalk AssetCentre Server InstallShield Wizard, click **Finish**.

FactoryTalk AssetCentre Client Package installer

See “Installing FactoryTalk AssetCentre server software” on page 29 for the steps to get to this part of the installation.

The Client Package installer creates a shared directory used by the install webpage to install the FactoryTalk AssetCentre client and FactoryTalk AssetCentre agent. This allows you to install FactoryTalk AssetCentre clients and agents on a remote machine without the installation disc. Instead, you can install the software through Internet Explorer.

To install the Client Package:

1. Follow the on-screen instructions.

FactoryTalk AssetCentre Common Components installer

See “Installing FactoryTalk AssetCentre server software” on page 29 for the steps to get to this part of the installation.

To install the common components:

1. Follow the on-screen instructions.
2. When asked to restart your computer, click **Yes**. You must restart the computer before you run the FactoryTalk AssetCentre server.
3. If you see messages indicating that the firewall has blocked a program, select **Unblock** on each message.



Depending on the speed of your computer, you may see the Install FactoryTalk AssetCentre server window for a moment after you restart and log back onto your server computer. This behavior is normal (the installation program is designed to check to see if everything is installed correctly before proceeding).

AFTER REBOOTING

The installation software will initiate each component install again in sequence beginning with the FactoryTalk Services Platform. You can cancel the installation for all components that you have already installed. The list below provides a step-by-step sequence to cancel all installs that have been completed to this point. What you see may vary depending on your particular system.

1. Click **Start** on the Install FactoryTalk AssetCentre Server window.

2. Depending on your FactoryTalk Directory setting, you may see the stop sign window again about how to set the FactoryTalk Directory. See step 4 on page 32 to make the appropriate choice.
3. Click **Continue** on the Check FactoryTalk Services Platform Configuration window.
4. The Client Package Installer window opens. You do not need to create the Client Package again; click **Cancel**.
5. Click **Start** on the Install FactoryTalk AssetCentre Server window.

FactoryTalk AssetCentre Calibration Management Server installer

See “Installing FactoryTalk AssetCentre server software” on page 29 for the steps to get to this part of the installation.



The FactoryTalk AssetCentre Calibration Management server must be installed in the same folder as the FactoryTalk AssetCentre server.

To install the Calibration Management server:

1. Follow the on-screen instructions.
2. After you install the FactoryTalk AssetCentre Calibration Management server, the ProCalV5 Connection Installer window opens. This step installs the database connection for ProCalV5. Provide this information from the ProCalV5 server installation:
 - The name of the SQL Server for the ProCalV5 database.
 - The ProCalV5 SQL Server login name (default is pcV5us01) and password.
 - The name of the ProCalV5 SQL database (default is PROCAL55RS).



If you have not installed the ProCalV5 server software, click **Skip**. You can install the ProCalV5 software after installing the FactoryTalk AssetCentre server software, and then create the ProCalV5 connection (as described on page 38).

3. Click **OK**.
4. In the Test Data Source window, click **Test Data Source**.
5. When the test is finished, click **Done**, and then click **OK**.
6. Click **Finish**.



FactoryTalk AssetCentre Process Device Configuration Server installer

See “Installing FactoryTalk AssetCentre server software” on page 29 for the steps to get to this part of the installation.



The FactoryTalk AssetCentre Process Device Configuration server must be installed in the same folder as the FactoryTalk AssetCentre server.

To install the Process Device Configuration server:

1. Follow the on-screen instructions.
2. Click **Finish**.

Using the Windows Firewall Configuration Utility

See “Installing FactoryTalk AssetCentre server software” on page 29 for the steps to get to this part of the installation.



If you have a firewall other than Windows Firewall, use the information in “Network requirements” on page 7 and “Additional ports you may have to open” on page 85 to configure your firewall to allow communication through the appropriate ports and with specific processes.

IF YOUR OPERATING SYSTEM IS WINDOWS SERVER 2003 SP 1 OR HIGHER

This operating system supports Windows Firewall. The Windows Firewall Configuration Utility runs whether you are using the firewall or not.

- If your Windows Firewall/Internet Connection Sharing (ICS) service is stopped or is disabled, the FactoryTalk AssetCentre Windows Firewall Configuration window indicates this with a red x. Click **Continue**. The FactoryTalk AssetCentre server installation is complete.

If you are using a firewall other than Windows Firewall, use the information in “Network requirements” on page 7 and “Additional ports you may have to open” on page 85 to configure your firewall to allow communication through the appropriate ports and with specific processes.

- If your Windows Firewall/Internet Connection Sharing (ICS) service is running, click **Start**. The Rockwell Software Windows Firewall Configuration Utility window opens. The list of exceptions (things to allow through the firewall) generally includes default SQL Server and e-mail ports.
- If no exceptions need to be made, none are listed and the Accept button is unavailable. In that case, click **Exit** to close this utility.
- Click **Accept**. On the Confirm Windows Firewall Changes window make the appropriate selection depending on whether your Windows Firewall will be on or off, then click **OK**.

IF YOUR OPERATING SYSTEM IS WINDOWS 2000 SERVER

This operating system does not support Windows Firewall so the Windows Firewall Configuration Utility will not open.

Installing the ProCalV5 server software after the FactoryTalk AssetCentre server

If you have purchased the Calibration Management capability for FactoryTalk AssetCentre, you would normally install the ProCalV5 server software before you install the FactoryTalk AssetCentre server (as described on page 28). However, if you did not install the ProCalV5 server before the FactoryTalk AssetCentre server, you can install it now.



If you installed the ProCalV5 server before you installed the FactoryTalk AssetCentre server, do not install the ProCalV5 server again.

1. Install the ProCalV5 server software as described on page 28.
2. Run the ProCalV5 Data Source Edit Wizard, described next.

Running the ProCalV5 Data Source Edit Wizard

If you installed the ProCalV5 server AFTER you installed the FactoryTalk AssetCentre server, you must run the ProCalV5 Data Source Edit Wizard to connect the ProCalV5 server to FactoryTalk AssetCentre.



This step is not necessary if you installed the ProCalV5 server before you installed the FactoryTalk AssetCentre server.



For this step, you need to know this information from the ProCalV5 server installation:

- The name of the SQL Server for the ProCalV5 database.
- The ProCalV5 SQL Server login name (default is pcV5us01) and password.
- The name of the ProCalV5 SQL database.

To connect the ProCalV5 server to FactoryTalk AssetCentre:

1. Click **Start > All Programs > Rockwell Software > FactoryTalk AssetCentre Server > ProCalV5 Data Source Configuration**.
2. Follow the on-screen instructions.

